

## 74VHC393 Dual 4-Bit Binary Counter

### General Description

The VHC393 is an advanced high speed CMOS 4-bit Binary Counter fabricated with silicon gate CMOS technology. It achieves the high speed operation similar to equivalent Bipolar Schottky TTL while maintaining the CMOS low power dissipation. It contains two independent counter circuits in one package, so that counting or frequency division of 8 binary bits can be achieved with one IC. This device changes state on the negative going transition of the CLOCK pulse. The counter can be reset to "0" ( $Q_0-Q_3 = "L"$ ) by a HIGH at the CLEAR input regardless of other inputs.

An input protection circuit ensures that 0V to 7V can be applied to the input pins without regard to the supply volt-

age. This device can be used to interface 5V to 3V systems and two supply systems such as battery back up. This circuit prevents device destruction due to mismatched supply and input voltages.

### Features

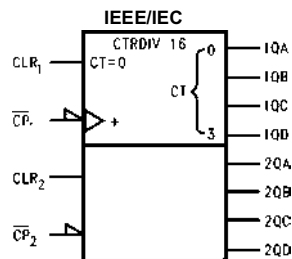
- High Speed:  $f_{MAX} = 170$  MHz (typ) at  $T_A = 25^\circ\text{C}$
- Low power dissipation:  $I_{CC} = 4$   $\mu\text{A}$  (max) at  $T_A = 25^\circ\text{C}$
- High noise immunity:  $V_{NIH} = V_{NIL} = 28\%$   $V_{CC}$  (min)
- Power down protection is provided on all inputs
- Pin and function compatible with 74HC393

### Ordering Code:

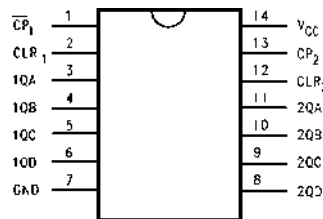
| Order Number | Package Number | Package Description  |
|--------------|----------------|--|
| 74VHC393M    | M14A           | 14-Lead Small Outline Integrated Circuit (SOIC), JEDEC MS-120, 0.150" Narrow |
| 74VHC393SJ   | M14D           | 14-Lead Small Outline Package (SOP), EIAJ TYPE II, 5.3mm Wide                |
| 74VHC393MTC  | MTC14          | 14-Lead Thin Shrink Small Outline Package (TSSOP), JEDEC MO-153, 4.4mm Wide  |
| 74VHC393N    | N14A           | 14-Lead Plastic Dual-In-Line Package (PDIP), JEDEC MS-001, 0.300 Wide        |

Surface mount packages are also available on Tape and Reel. Specify by appending the suffix letter "X" to the ordering code.

### Logic Symbol





### Connection Diagram



### Pin Descriptions

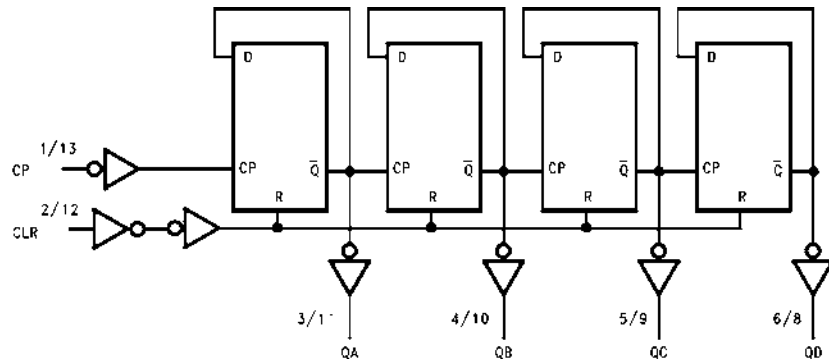
| Pin Names                          | Description        |
|------------------------------------|--------------------|
| CLR1, CLR2                         | Clear Inputs       |
| $\overline{CP}_1, \overline{CP}_2$ | Clock Pulse Inputs |
| QA, QB, QC, QD                     | Outputs            |

**Truth Table**

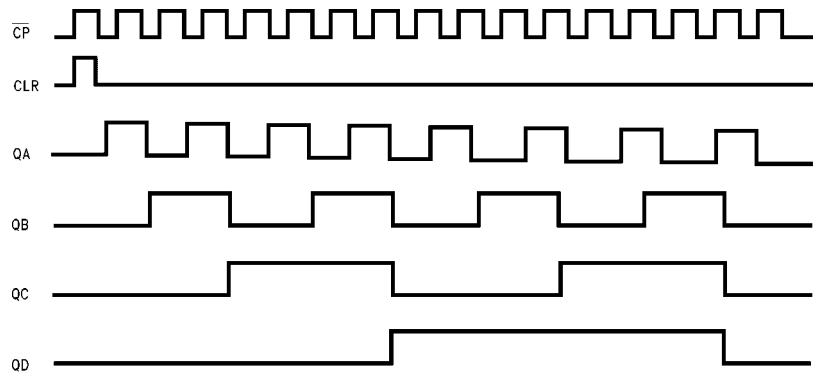
| Inputs  |     | Outputs   |    |    |    |
|---|-----|-----------|----|----|----|
| $\overline{CP}$   | CLR | QA        | QB | QC | QD |
| X   | H   | L         | L  | L  | L  |
|  | L   | Count Up  |    |    |    |
|  | L   | No Change |    |    |    |

X: Don't Care

**System Diagram**



**Timing Chart**



**Absolute Maximum Ratings** (Note 1)

|   |                          |
|---|--------------------------|
| Supply Voltage ( $V_{CC}$ )                           | -0.5V to +7.0V           |
| DC Input Voltage ( $V_{IN}$ )                         | -0.5V to +7.0V           |
| DC Output Voltage ( $V_{OUT}$ )                       | -0.5V to $V_{CC} + 0.5V$ |
| Input Diode Current ( $I_{IK}$ )                      | -20 mA                   |
| Output Diode Current ( $I_{OK}$ )                     | $\pm 20$ mA              |
| DC Output Current ( $I_{OUT}$ )                       | $\pm 25$ mA              |
| DC $V_{CC}/GND$ Current ( $I_{CC}$ )                  | $\pm 75$ mA              |
| Storage Temperature ( $T_{STG}$ )                     | -65°C to +150°C          |
| Lead Temperature ( $T_L$ )<br>(Soldering, 10 seconds) | 260°C                    |

**Recommended Operating Conditions** (Note 2)

|   |                |
|---|----------------|
| Supply Voltage ( $V_{CC}$ )             | 2.0V to +5.5V  |
| Input Voltage ( $V_{IN}$ )              | 0V to +5.5V    |
| Output Voltage ( $V_{OUT}$ )            | 0V to $V_{CC}$ |
| Operating Temperature ( $T_{OPR}$ )     | -40°C to +85°C |
| Input Rise and Fall Time ( $t_r, t_f$ ) |                |
| $V_{CC} = 3.3V \pm 0.3V$                | 0 ~ 100 ns/V   |
| $V_{CC} = 5.0V \pm 0.5V$                | 0 ~ 20 ns/V    |

**Note 1:** Absolute Maximum Ratings are values beyond which the device may be damaged or have its useful life impaired. The databook specifications should be met, without exception, to ensure that the system design is reliable over its power supply, temperature, and output/input loading variables. Fairchild does not recommend operation outside databook specifications.

**Note 2:** Unused inputs must be held HIGH or LOW. They may not float.

**DC Electrical Characteristics**

| Symbol   | Parameter                | $V_{CC}$<br>(V) | $T_A = 25^\circ\text{C}$ |     |      | $T_A = -40^\circ\text{C to } +85^\circ\text{C}$ |     | Units                            | Conditions   |  |  |
|----------|--------------------------|-----------------|--------------------------|-----|------|---|-----|----------------------------------|--|--|--|
|          |                          |                 | Min                      | Typ | Max  | Min   | Max |                                  |  |  |  |
| $V_{IH}$ | HIGH Level               | 2.0             | 1.50                     |     |      | 1.50  |     | V                                |  |  |  |
|          | Input Voltage            | 3.0 – 5.5       | 0.7 $V_{CC}$             |     |      | 0.7 $V_{CC}$                                    |     |                                  |  |  |  |
| $V_{IL}$ | LOW Level                | 2.0             | 0.50                     |     |      | 0.50  |     | V                                |  |  |  |
|          | Input Voltage            | 3.0 – 5.5       | 0.3 $V_{CC}$             |     |      | 0.3 $V_{CC}$                                    |     |                                  |  |  |  |
| $V_{OH}$ | HIGH Level               | 2.0             | 1.9                      | 2.0 | 1.9  |   | V   | $V_{IN} = V_{IH}$<br>or $V_{IL}$ | $I_{OH} = -50 \mu\text{A}$                           |  |  |
|          |                          | 3.0             | 2.9                      | 3.0 | 2.9  |   |     |                                  |  |  |  |
|          | Output Voltage           | 4.5             | 4.4                      | 4.5 | 4.4  |   | V   |                                  | $I_{OH} = -4 \text{ mA}$<br>$I_{OH} = -8 \text{ mA}$ |  |  |
|          |                          | 3.0             | 2.58                     |     | 2.48 |   |     |                                  |  |  |  |
| $V_{OL}$ | LOW Level                | 2.0             | 0.0                      |     |      | 0.1   |     | V                                | $V_{IN} = V_{IH}$<br>or $V_{IL}$                     | $I_{OL} = 50 \mu\text{A}$                          |  |
|          |                          | 3.0             | 0.0                      |     |      | 0.1   |     |                                  |  |  |  |
|          | Output Voltage           | 4.5             | 0.0                      |     |      | 0.1   |     | V                                |  | $I_{OL} = 4 \text{ mA}$<br>$I_{OL} = 8 \text{ mA}$ |  |
|          |                          | 3.0             |                          |     |      | 0.36  |     |                                  |  |  |  |
| $I_{IN}$ | Input Leakage Current    | 0 – 5.5         |                          |     |      | $\pm 0.1$                                       |     | $\mu\text{A}$                    | $V_{IN} = 5.5V$ or GND                               |  |  |
|          |                          |                 |                          |     |      | $\pm 1.0$                                       |     |                                  |  |  |  |
| $I_{CC}$ | Quiescent Supply Current | 5.5             |                          |     |      | 4.0   |     | $\mu\text{A}$                    | $V_{IN} = V_{CC}$ or GND                             |  |  |

## AC Electrical Characteristics

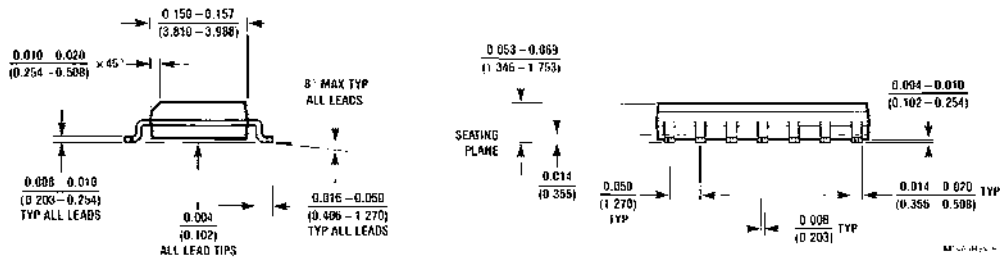
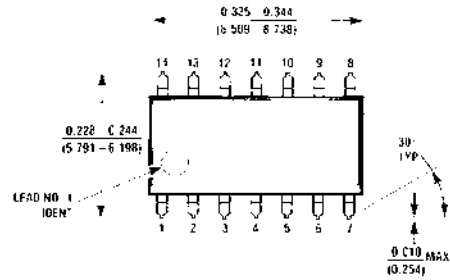
| Symbol           | Parameter  | V <sub>CC</sub><br>(V) | T <sub>A</sub> = 25°C |      |     | T <sub>A</sub> = -40°C to +85°C |     | Units                  | Conditions |
|------------------|--|------------------------|-----------------------|------|-----|---------------------------------|-----|------------------------|------------|
|                  |  |                        | Min                   | Typ  | Max | Min                             | Max |                        |            |
| t <sub>PLH</sub> | Propagation<br>Delay Time<br>(CP -QA)              | 3.3 ± 0.3              | 8.6                   | 13.2 | 1.0 | 15.5                            | ns  | C <sub>L</sub> = 15 pF |            |
| t <sub>PHL</sub> |  |                        | 11.1                  | 16.7 | 1.0 | 19.0                            |     | C <sub>L</sub> = 50 pF |            |
|                  |  | 5.0 ± 0.5              | 5.8                   | 8.5  | 1.0 | 10.0                            | ns  | C <sub>L</sub> = 15 pF |            |
|                  |  |                        | 7.3                   | 10.5 | 1.0 | 12.0                            |     | C <sub>L</sub> = 50 pF |            |
| t <sub>PLH</sub> | Propagation<br>Delay Time<br>(CP -QB)              | 3.3 ± 0.3              | 10.2                  | 15.8 | 1.0 | 18.5                            | ns  | C <sub>L</sub> = 15 pF |            |
| t <sub>PHL</sub> |  |                        | 12.7                  | 19.3 | 1.0 | 22.0                            |     | C <sub>L</sub> = 50 pF |            |
|                  |  | 5.0 ± 0.5              | 6.8                   | 9.8  | 1.0 | 11.5                            | ns  | C <sub>L</sub> = 15 pF |            |
|                  |  |                        | 8.3                   | 11.8 | 1.0 | 13.5                            |     | C <sub>L</sub> = 50 pF |            |
| t <sub>PLH</sub> | Propagation<br>Delay Time<br>(CP -QC)              | 3.3 ± 0.3              | 11.7                  | 18.0 | 1.0 | 21.0                            | ns  | C <sub>L</sub> = 15 pF |            |
| t <sub>PHL</sub> |  |                        | 14.2                  | 21.5 | 1.0 | 24.5                            |     | C <sub>L</sub> = 50 pF |            |
|                  |  | 5.0 ± 0.5              | 7.7                   | 11.2 | 1.0 | 13.0                            | ns  | C <sub>L</sub> = 15 pF |            |
|                  |  |                        | 9.2                   | 13.2 | 1.0 | 15.0                            |     | C <sub>L</sub> = 50 pF |            |
| t <sub>PLH</sub> | Propagation<br>Delay Time<br>(CP -QD)              | 3.3 ± 0.3              | 13.0                  | 19.7 | 1.0 | 23.0                            | ns  | C <sub>L</sub> = 15 pF |            |
| t <sub>PHL</sub> |  |                        | 15.5                  | 23.2 | 1.0 | 26.5                            |     | C <sub>L</sub> = 50 pF |            |
|                  |  | 5.0 ± 0.5              | 8.5                   | 12.5 | 1.0 | 14.5                            | ns  | C <sub>L</sub> = 15 pF |            |
|                  |  |                        | 10.0                  | 14.5 | 1.0 | 16.5                            |     | C <sub>L</sub> = 50 pF |            |
| t <sub>PLH</sub> | Propagation<br>Delay Time<br>(CLR-Q <sub>n</sub> ) | 3.3 ± 0.3              | 7.9                   | 12.3 | 1.0 | 14.5                            | ns  | C <sub>L</sub> = 15 pF |            |
| t <sub>PHL</sub> |  |                        | 10.4                  | 15.8 | 1.0 | 18.0                            |     | C <sub>L</sub> = 50 pF |            |
|                  |  | 5.0 ± 0.5              | 5.4                   | 8.1  | 1.0 | 9.5                             | ns  | C <sub>L</sub> = 15 pF |            |
|                  |  |                        | 6.9                   | 10.1 | 1.0 | 11.5                            |     | C <sub>L</sub> = 50 pF |            |
| f <sub>MAX</sub> | Maximum<br>Clock                                   | 3.3 ± 0.3              | 75                    | 120  | 65  |                                 | MHz | C <sub>L</sub> = 15 pF |            |
|                  |  |                        | 45                    | 65   | 35  |                                 |     | C <sub>L</sub> = 50 pF |            |
|                  |  | 5.0 ± 0.5              | 125                   | 170  | 105 |                                 |     | C <sub>L</sub> = 15 pF |            |
|                  |  |                        | 85                    | 115  | 75  |                                 |     | C <sub>L</sub> = 50 pF |            |
| C <sub>IN</sub>  | Input Capacitance                                  |                        | 4                     | 10   | 10  |                                 | pF  | V <sub>CC</sub> = Open |            |
| C <sub>PD</sub>  | Power Dissipation<br>Capacitance                   |                        | 23                    |      |     |                                 | pF  | (Note 3)               |            |

**Note 3:** C<sub>PD</sub> is defined as the value of the internal equivalent capacitance which is calculated from the operating current consumption without load Average operating current can be obtained by the equation: I<sub>CC(opr.)</sub> = C<sub>PD</sub> \* V<sub>CC</sub> \* f<sub>IN</sub> + I<sub>CC/2</sub> (per Counter)

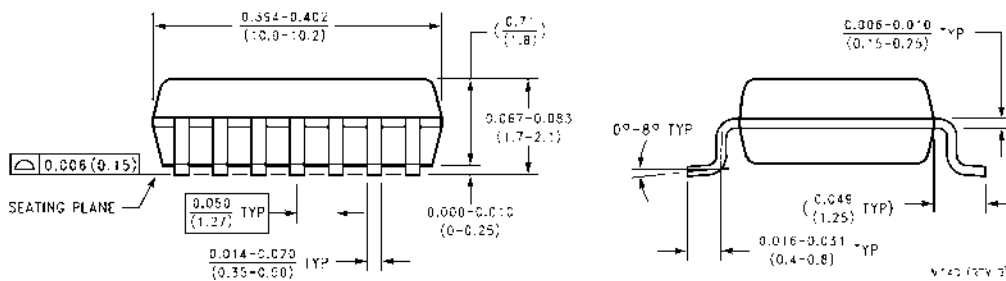
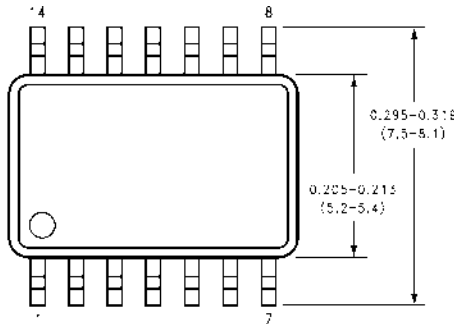
## AC Operating Requirements

| Symbol            | Parameter               | V <sub>CC</sub><br>(V) | T <sub>A</sub> = 25°C |                    | T <sub>A</sub> = -40°C to +85°C |  | Units |
|-------------------|-------------------------|------------------------|-----------------------|--------------------|---------------------------------|--|-------|
|                   |                         |                        | Typ                   | Guaranteed Minimum |                                 |  |       |
| t <sub>W(L)</sub> | Minimum Pulse           | 3.3 ± 0.3              |                       | 5.0                | 5.0                             |  | ns    |
| t <sub>W(H)</sub> | Width (CP)              | 5.0 ± 0.5              |                       | 5.0                | 5.0                             |  |       |
| t <sub>W(H)</sub> | Minimum Pulse           | 3.3 ± 0.3              |                       | 5.0                | 5.0                             |  | ns    |
|                   | Width (CLR)             | 5.0 ± 0.5              |                       | 5.0                | 5.0                             |  |       |
| t <sub>REM</sub>  | Minimum Removal<br>Time | 3.3 ± 0.3              |                       | 5.0                | 5.0                             |  | ns    |
|                   |                         | 5.0 ± 0.5              |                       | 4.0                | 4.0                             |  |       |

**Physical Dimensions** inches (millimeters) unless otherwise noted



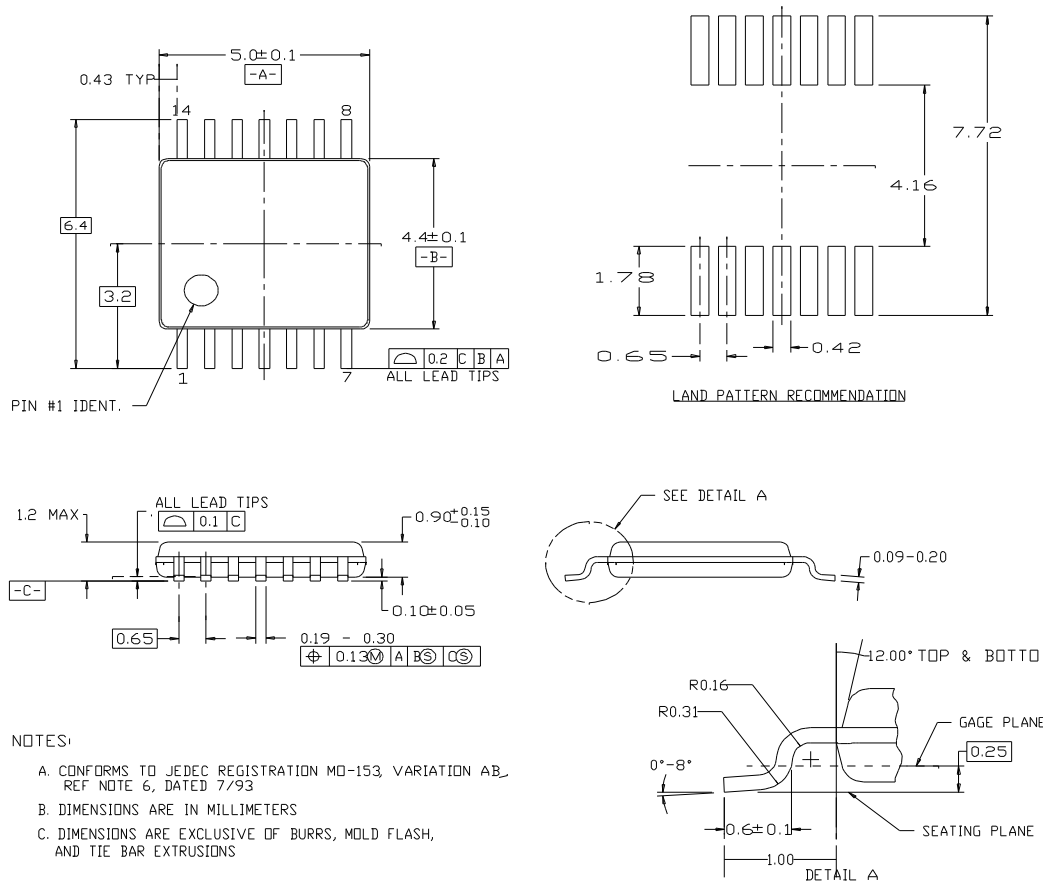
**14-Lead Small Outline Integrated Circuit (SOIC), JEDEC MS-120, 0.150 Narrow  
Package Number M14A**



**14-Lead Small Outline Package (SOP), EIAJ TYPE II, 5.3mm Wide  
Package Number M14D**

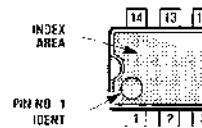
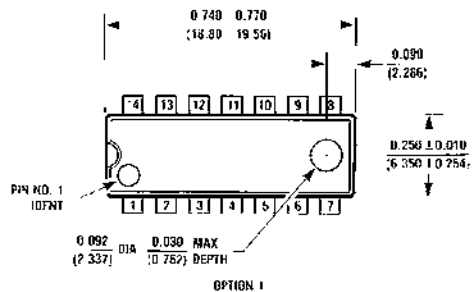
**Physical Dimensions** inches (millimeters) unless otherwise noted (Continued)

14LD, TSSOP, JEDEC MO-153, 4.4MM WIDE

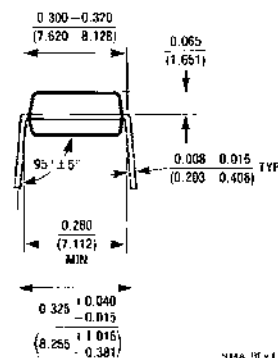
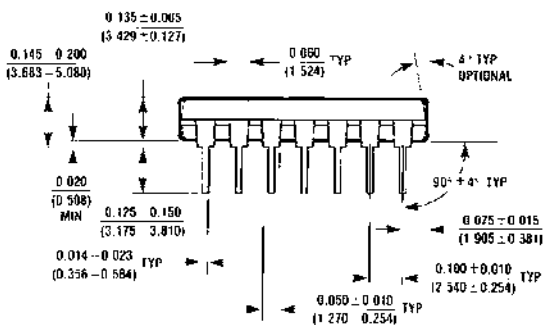


**14-Lead Thin Shrink Small Outline Package (TSSOP), JEDEC MO-153, 4.4mm Wide  
Package Number MTC14**

**Physical Dimensions** inches (millimeters) unless otherwise noted (Continued)



OPTION 02



MS-018

**14-Lead Plastic Dual-In-Line Package (PDIP), JEDEC MS-001, 0.300 Wide Package Number N14A**

**LIFE SUPPORT POLICY**

FAIRCHILD'S PRODUCTS ARE NOT AUTHORIZED FOR USE AS CRITICAL COMPONENTS IN LIFE SUPPORT DEVICES OR SYSTEMS WITHOUT THE EXPRESS WRITTEN APPROVAL OF THE PRESIDENT OF FAIRCHILD SEMICONDUCTOR CORPORATION. As used herein:

1. Life support devices or systems are devices or systems which, (a) are intended for surgical implant into the body, or (b) support or sustain life, and (c) whose failure to perform when properly used in accordance with instructions for use provided in the labeling, can be reasonably expected to result in a significant injury to the user.
2. A critical component in any component of a life support device or system whose failure to perform can be reasonably expected to cause the failure of the life support device or system, or to affect its safety or effectiveness.

[www.fairchildsemi.com](http://www.fairchildsemi.com)