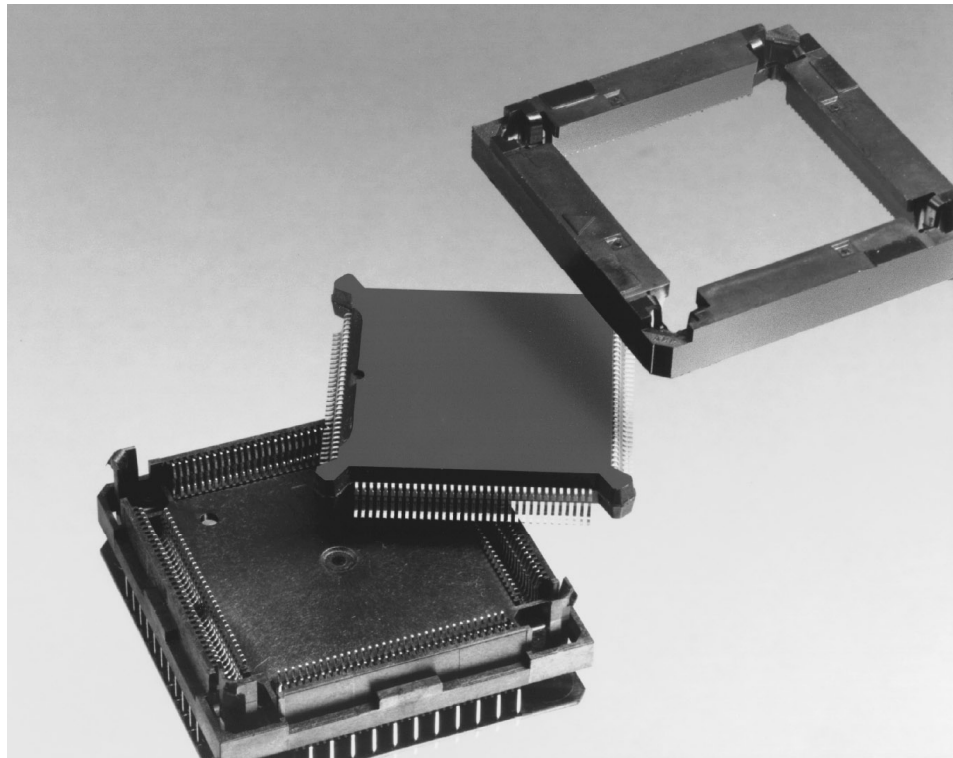


Standard

Product Facts

- .025 [0.64] centerline for high density, low cost packaging
- Low profile permits even higher density packaging with only .375 [9.53] maximum height pc boards
- High normal force and positive engagement allows for reliable service to minimise field failures
- Protective cover separates and safeguards IC leads during handling and insertion
- Closed-bottom housing aids in prevention of solder bridging between contacts
- Contacts absorb mating and reaction forces for board and housing protection
- Economical design makes socketing of semi-conductor devices more attractive
- .020 [0.51] minimum wipe contact insures reliability of tin-to-tin interface
- High temperature materials
- Sockets can be spaced a minimum of .150 [3.81] from each other



The two-piece design of the AMP socket eases the problems of handling the gullwing-leaded PQFP packages. The IC is first inserted into the plastic cover and then, using the insertion tool, the cover is secured over the socket housing to insert the chip into the socket. The completed assembly presents a low .375 [9.53] profile to permit close stacking of pc boards.

The cover, which is separately available, contains slots that not only protect and separate the leads, but also for proper lead-to-contact registration between chip and socket. In addition, the cover provides a rugged cost-effective method of protecting the PQFP IC during shipping, handling and assembly. Visual and mechanical polarisation for proper orientation of cover and housing during mating,

while spring latches in the four corners secure the cover to the housing.

Tin plated socket contacts provide a minimum .020 [0.51] wipe and exert a high normal force to the IC leads. The solder legs are arranged on a .075 x .100 [1.91 x 2.54] three-row grid to permit easy trace routing.

High-temperature housing materials and a sealed bottom allow the socket to withstand the rigors of flow soldering lines and other automated assembly. Standoffs ease flux cleaning.

Available in 100- and 132-position sizes, the socket features short leads and low capacitance, making it highly compatible with high-speed circuits.

Performance Characteristics:

Current Rating — 1 ampere max.

Operating Temperature — +55°C to +105°C

Dielectric Withstanding Voltage — 750 VAC min.

Capacitance (Adjacent Contacts) — 1 picofarad max.

Durability — 15 insertion/withdrawal cycles

Technical Documents:

Product Specification
108-1223

Application Specification
114-1070

Test Report
501-90

Instruction Sheets
408-3289 Hand Tools
408-9772 Pneumatic Tools

Standard

Materials and Finish:

Housing — High temperature thermoplastic, 94V-0 rated, black

Cover — Polyphenylene sulfide (PPS), 94V-0 rated, black

Contacts — Phosphor bronze with .000200 [0.00508] tin over .000050 [0.00127] nickel

Insertion Hand Tools

100 Position

Part Number 822253-1

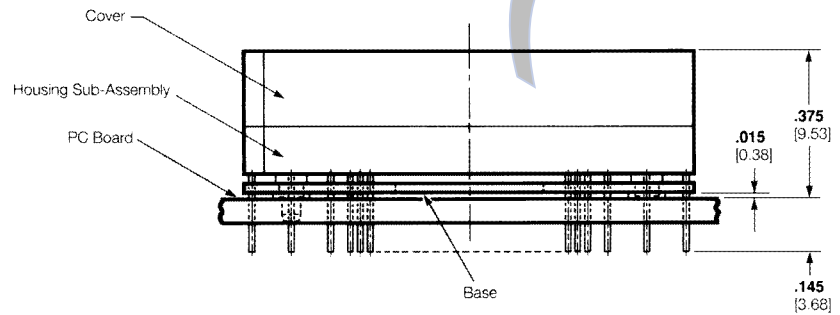
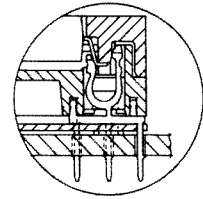
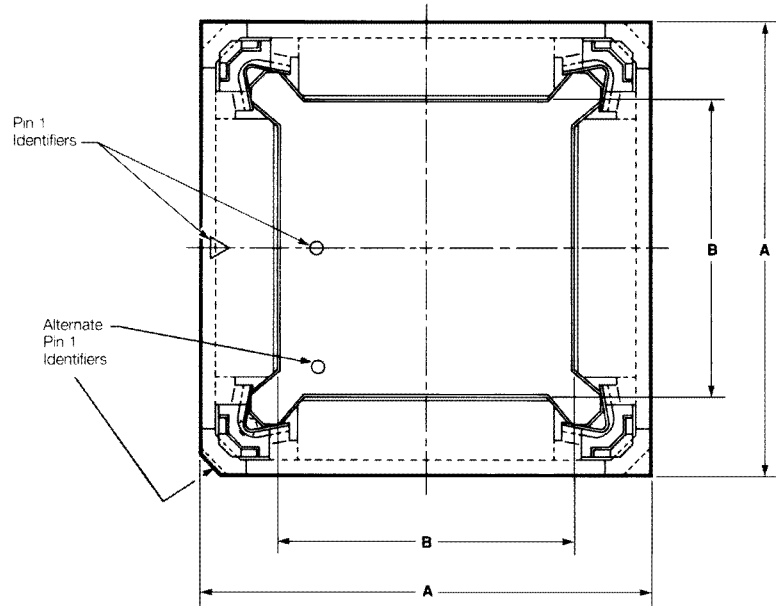
132 Position

Part Number 822253-2



Extraction Tool

Part Number 822254-1



No. of Positions	Dimensions		Conventional AMP Sockets	Replacement for 3M TEXT TOOL Sockets	
	A	B	Housing Sub-Assembly	Housing Sub-Assembly	Cover
100	1.140	.750	821949-4 ¹	822064-4 ²	821939-1
	28.96	19.05			
132	1.340	.950	821949-5 ¹	822064-5	821942-1
	34.04	24.13			

¹ Conventional footprint.

² Reverse footprint.

Packaging Quantities:

100 Position — 19 Pcs./Tube, 54 Tubes/Box, Total = 1026 Pcs./Box

132 Position — 16 Pcs./Tube, 45 Tubes/Box, Total = 720 Pcs./Box